



THOUGHTFUL
DESIGN.
TOP OF THE
LINE QUALITY.

NEW FROM **HARDCRAFT** **TERMINATION CABINETS**

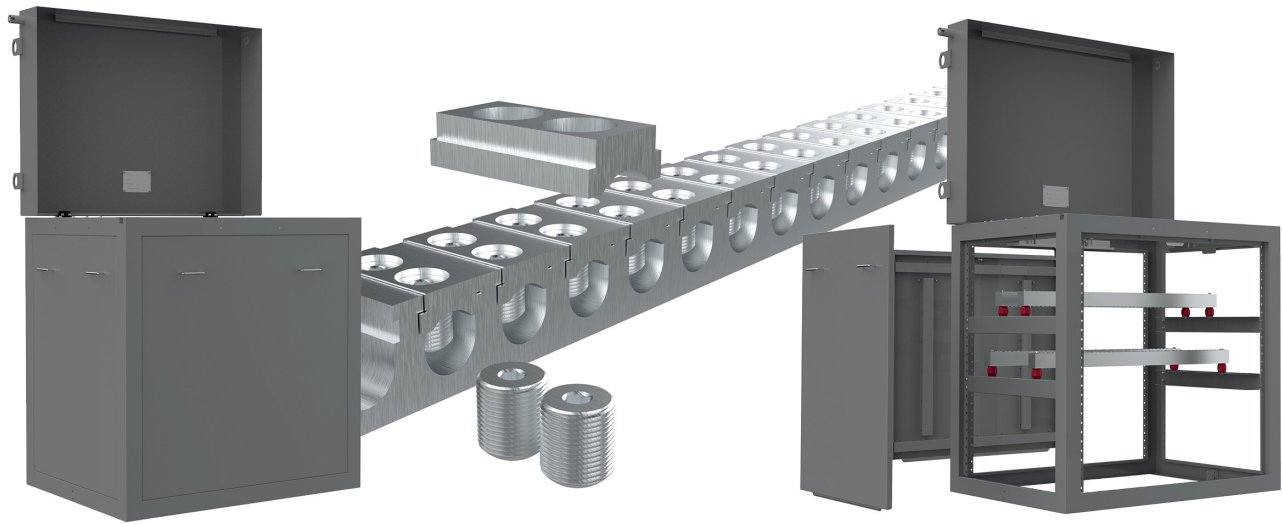
Hardcraft's legendary design and fabrication quality, as well as quick-turn delivery, *lead the industry* for electrical enclosure applications.

Hardcraft offers the ultimate **TERMINATION CABINETS** for your high-voltage applications. Designed and manufactured entirely in-house, our solution includes numerous proprietary details to improve installation efficiency and field serviceability, including:

- ♦ **Easy Installation** - Fully installable by two field personnel without special lifting equipment
- ♦ **Full Accessibility** - All four side panels fully removable, tool-free; unobstructed interior access from all five sides of mounted enclosure
- ♦ **High Intrusion Resistance** - Hinged top panel secured by universal electrician's key, padlockable heavy-duty bolt mechanism, reinforced side panels
- ♦ **Simple Connectivity** - Unique, CNC-milled buss bars oriented for vertical cable insertion, removing a 90 degree cable bend that would otherwise be required



PREMIER DESIGN. PREMIER BUILD.



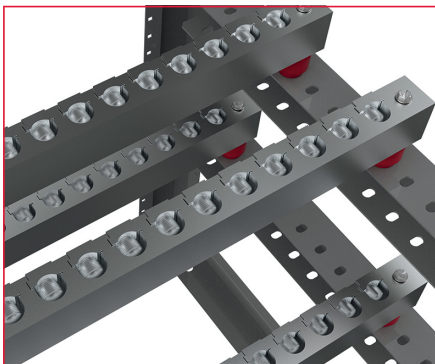
ALL ENCLOSURES FEATURE

Full Customization
Expert Engineering Support
USA Fabrication

Quick Turn:

Standard Products/
Repeat Orders 4-6 Weeks
New Custom Orders 6-8 Weeks
Including Design Time

Highest Quality Materials
Tight Tolerances
Worldwide Delivery



THE EXTENSIVE RANGE OF STANDARD FEATURES INCLUDES

- ◆ NEMA 3R Enclosure
- ◆ Fully TIG-Welded High-Strength Steel Frame
- ◆ Pry-Resistant Reinforced Aluminum Lift-Off Doors (ISO9001-Certified Intrusion Resistance)
- ◆ Full-Swing Top Door With Heavy-Duty Padlockable Penta-Bolt Security Mechanism and Prop Rod
- ◆ Four Heavy Duty Lifting Eyes on Top Panel
- ◆ Massive 6061-T6 Aluminum Precision-Milled Buss Bars with Milled 6061-T6 Inserts & Set Screws
- ◆ Fully Field-Adjustable Buss Bar Mounting Locations
- ◆ Stainless Steel Door Mounting & Release Hardware
- ◆ Stainless Steel Screws & Other Small Hardware Throughout
- ◆ Finish In Any Standard Powdercoat Color (Shown in ANSI Gray)
- ◆ Dimensions
 - ◇ Standard Maximum 54" W x 38" D x 52" H Including Top Cover Lifting Eyes and Security Features
 - ◇ Main Body of Enclosure 48" W x 36" D x 48" H

Optional Features Include

- ◆ Custom Enclosure Sizes To Meet Any Space or Capacity Requirement
- ◆ Larger Buss Bars For Higher-Current Applications
- ◆ Alternative Buss Bar Orientation in Cabinet
- ◆ Additional Door Reinforcement for Extreme Intrusion Resistance
- ◆ Full Mild Steel or Stainless Steel Construction

www.hardcraft.com



✉ info@hardcraft.com ☎ 408.432.8340
🌐 2221 Ringwood Avenue | San Jose, CA 95131